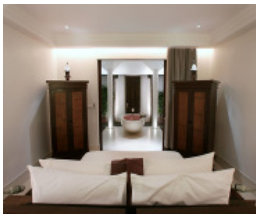




## 4D3N Sweet Suite Deal @ Hotel De La Paix



Issued Date: Feb 08, 2012 / CH

Travel Validity: Travel from 20 Feb - 30 June, 2012

Address: Sivutha Boulevard, Central, Siem Reap, Cambodia

Tour Code: REP - 003PK(170/125)

Sales Validity: Book by 27Mar, 2012

Suite Type	ADULT (Per person in SGD)			CHILD (Per person in SGD)		Extension with breakfast (Per suite night in SGD)		
	SINGLE	TWIN	TRIPLE	HALF TWIN	CHILD NO BED	SINGLE / TWIN	TRIPLE	CHILD NO BED
<b>Deluxe Suite / Courtyard Garden Suite</b>								
February 2012	1598	888	758	848	218	440	525	20
March - April 2012	1458	828	708	798	218	400	480	20
May - June 2012	1278	748	668	698	228	330	415	20

• **Suite occupancy:**

Deluxe Suite is 2 adults and 2 children OR 3 adults per room.

Courtyard Garden Suite - maximum of 2 adults only.

**UOB Travel Exclusive**

**Package Inclusions:**

- ♥ Round-trip economy class airfare on Silkair (GV2 / max 7D - Feb-Apr book "N" clas / May - Jun 2012 book "Q" class )
- ♥ 3 nights' stay in a Deluxe Suite or Courtyard Garden Suite, with daily gourmet breakfast at Meric Restaurant
- ♥ Private round-trip airport transfer provided by the hotel (Camry)
- ♥ Welcome drink upon arrival in the hotel and complimentary WiFi use throughout stay

**UOB Travel Exclusive One-Time Value-Adds:**

- Contemporary afternoon Tea Set for 2 guests at the Arts Lounge
- 60 mins Spa Indochine massage per guest per stay (excluding blind massage)
- 20% discount for Spa Indochine massage (not to be used in conjunction with other offers or promotion, excluding blind massage, manicure, pedicure and baths.)

♥ **Honeymoon couples enjoy Honeymoon Bliss package** ♥

- ♥ Complimentary guaranteed upgrade to next room category, subject to availability
- ♥ Khmer "Welcome Tea" in room on arrival ♥ One-time 'Pamper your Partner' Khmer massage lesson per stay
- ♥ Daily 'Turn-On' treats at evening turn-down ♥ One-time Traditional Khmer rose petal bath for the couple per stay
- ♥ Early check-in and late check-out, subject to availability.

**Terms & Conditions**

- Minimum 2 adults to travel at all times. SilkAir "N" class tickets to be issued from October 01, 2011.
- Check-in time after 2pm / Check-out time before 12pm
- All arrangements are subject to availability and confirmation. Package price is applicable for Singapore Market only.
- Fares quoted are based on per person and exclude all relevant taxes and high season surcharges.
- Estimated airport taxes: S\$158 (taxes are subject to changes)
- Tipping for guide/driver are optional and at customers' own discretion.
- An amendment fee of S\$50 per person will be levied for any amendment on top of any charges imposed by our supplier.
- Tickets issued are non-refundable / non-endorsable / non-re routable. Other terms and conditions apply.

SilkAir Top-Up Chart/Surcharge	Adult S\$	Child S\$	Terms & Conditions
FIT "Q" class (2/14D)	+ 30	+ 25	Top up from "N" to "Q" class for travel Feb - Apr 2012 "N" / "Q" class not valid for travel on MI 1000 - MI 9999 flights

6 252 6822

480 Lorong 6 Toa Payoh, #20-01 HDB Hub East Wing, Singapore 310480  
Co. Reg. No. 197400040W

UOBTP-Leisure@UOBgroup.com

INSTANT HOLIDAYS ON  
**UOBTravel.com**

