



Stay 3, Pay 2

@ PAN PACIFIC NIRWANA BALI RESORT



Issued Date: January 31, 2012/CK

Tour Code: DPS - 031 PK (120 / 90)

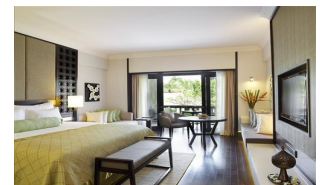
Travel Date: Ex-SIN from now to June 30, 2012

Booking Validity: Book from now to February 26, 2012

Room Type	Adult (Price per person in SGD)		Child (Price per person in SGD)		Extension With Breakfast (Price per room night in SGD)		
	Twin	Triple	With Bed	Without Bed	Twin	Triple	Child Without Bed
Golf View	468	398	248	148	248	318	20
Deluxe Garden View	488	428	248	148	278	338	20
Deluxe Pool View	528	448	248	148	308	378	20
Ocean View	548	468	248	148	338	408	20



Jalan Raya Tanah Lot, Tanah Lot, Bali,
Indonesia 82171



Airfare Top up / Discount Chart

Booking Class	Adult S\$	Child S\$	Remarks
SQ GV02 "N" class	+ 180	+ 135	Valid for all flights / min stay 2 days, max stay 14 days
SQ FIT "Q" class	+ 250	+ 190	Valid for all flights / min stay 2 days, max stay 14 days
GA GV02 "V" class	+ 50	+ 38	Valid on GA841 & GA840 only / 0/14D / Ex-SIN by 31 MAR 2012
QR GV02 "H" class	+ 50	+ 38	Valid for all flights / - no min stay, max stay 14days

Inclusions

- Round-trip economy airfare on KLM Royal Dutch Airlines ('N' class) to Bali
- 3 nights' stay in choice of room with daily buffet breakfast
- Round-trip private airport transfers provided by the hotel (estimated 45 minutes drive per way)
- Daily complimentary 2 bottles of water and fresh fruit platter
- Welcome drink and cold towel on arrival
- 15% off spa treatment for minimum 3 nights stay

Optional Golfing Rate @ S\$150 per person for a one-time 18 holes game

- Rate includes green cart fees and caddy fees

VALUE-ADDS:

- Complimentary Sunset tour to Tanah Lot
- Complimentary scheduled shuttle service to Kuta and Seminyak
- Rose petal bed turndown, flower bath on arrival and heart shaped chocolate cake for honeymooners*

Terms and Conditions

- Check-in after 3pm // Check-out before 12pm // Minimum 02 adults to book and travel together
- Estimated KL taxes: S\$73 // Indonesian airport tax 150,000 Rupiah payable in Indonesia (subject to changes)
- Ticket once issued has no refund value. Prices are correct at time of print and subject to changes with/without prior notice.
- A fee of S\$50 per person will be levied for amendments on top of any charges (if any) imposed by our supplier or airline.
 - Rates exclude all relevant taxes, high season surcharges etc and are not valid for blackout period.
 - Deposit paid does not constitute confirmation of tour. Others terms and conditions apply.

6 252 6822

UOBTP-Leisure@UOBgroup.com

480 Lorong 6 Toa Payoh, #20-01 HDB Hub East Wing, Singapore 310480

Co. Reg. No. 197400040W

